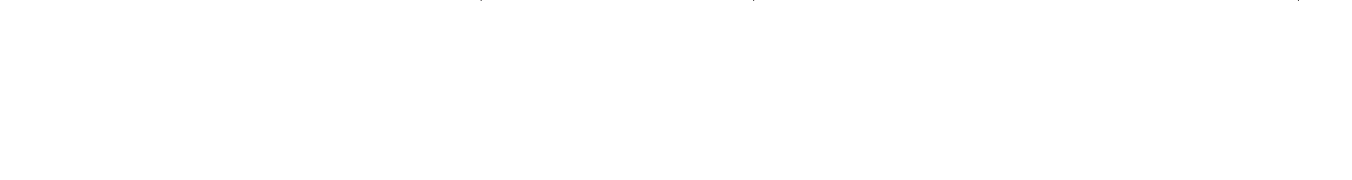
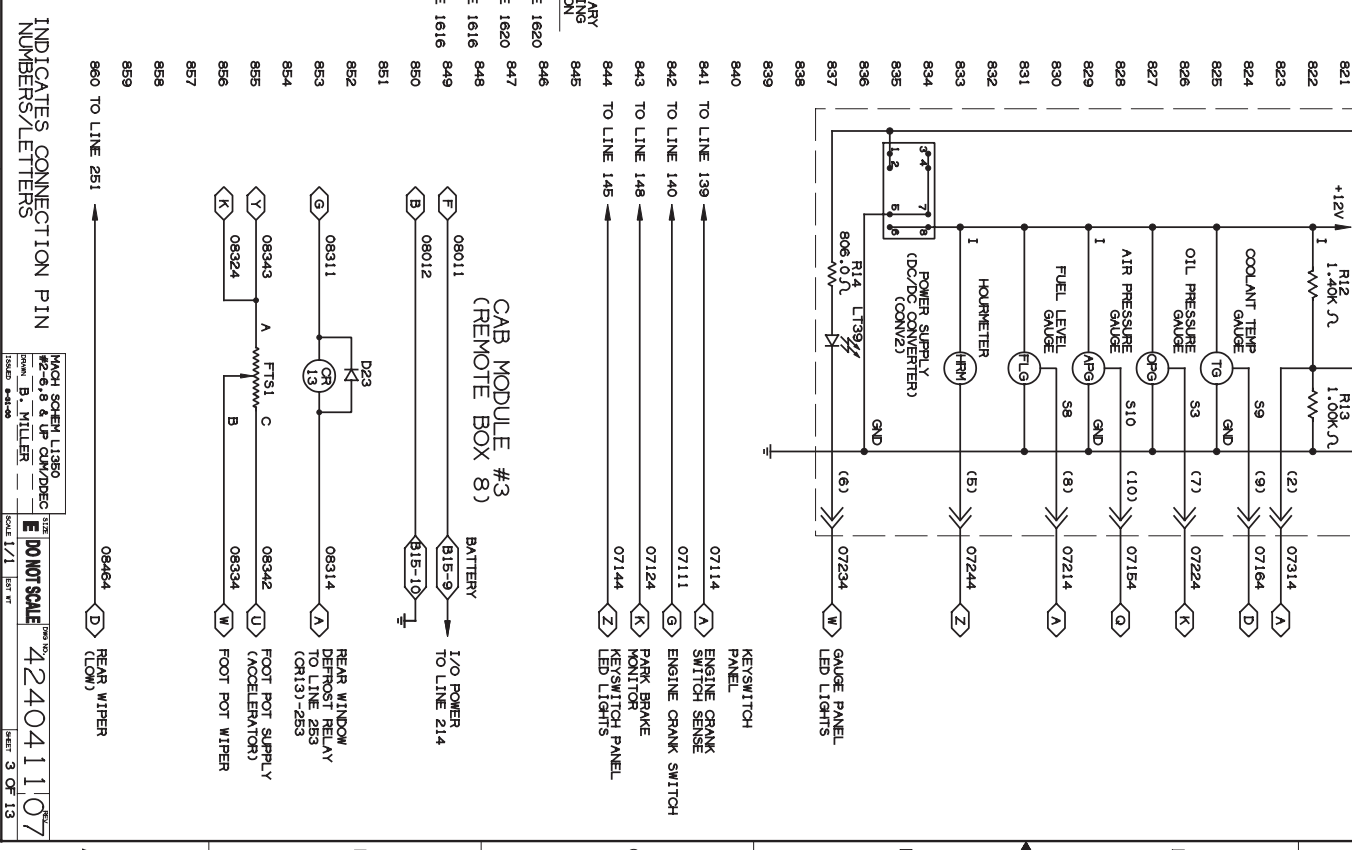
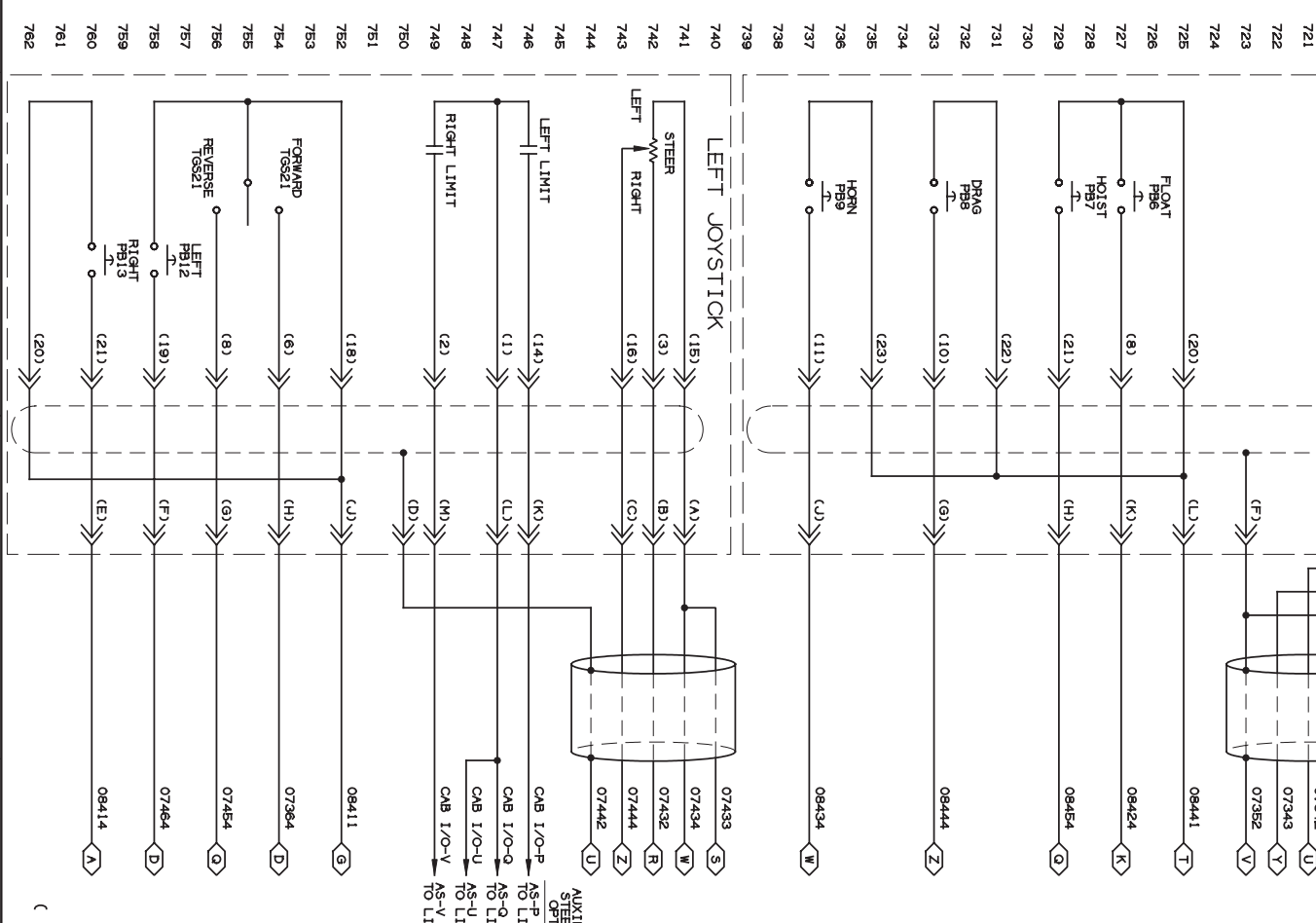
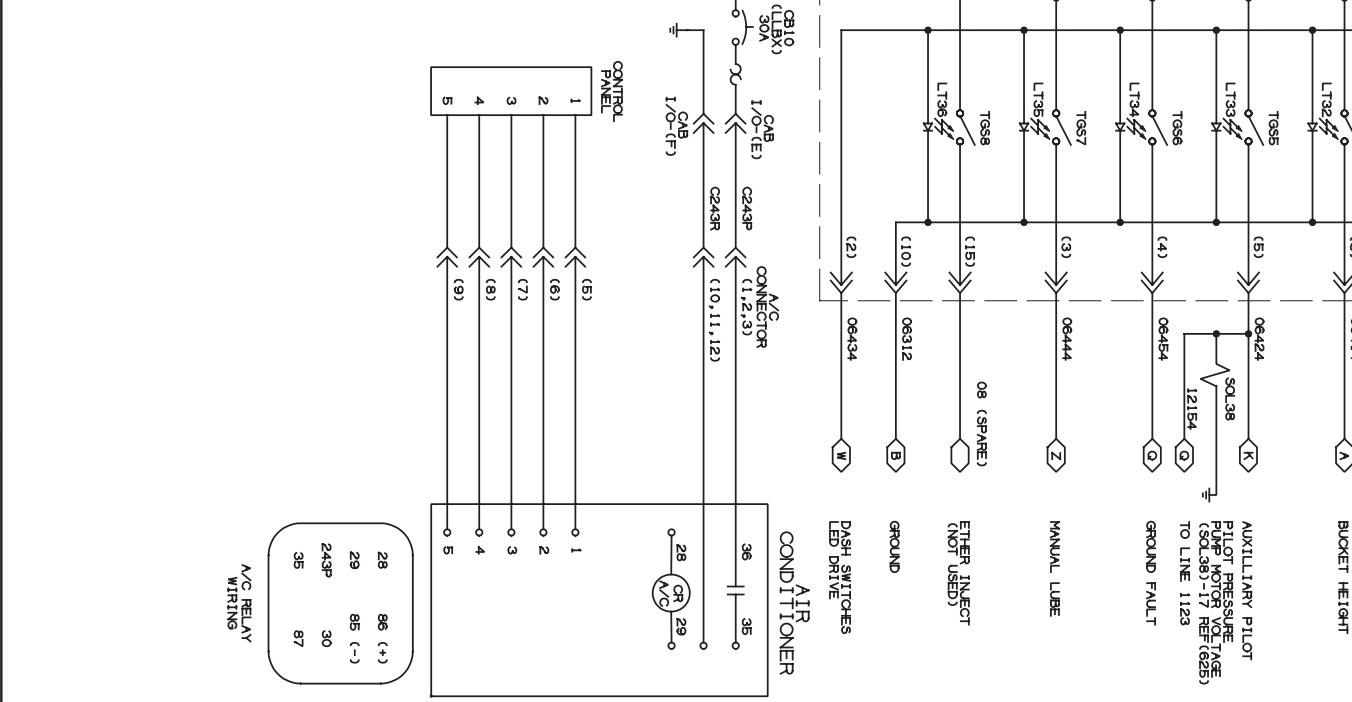
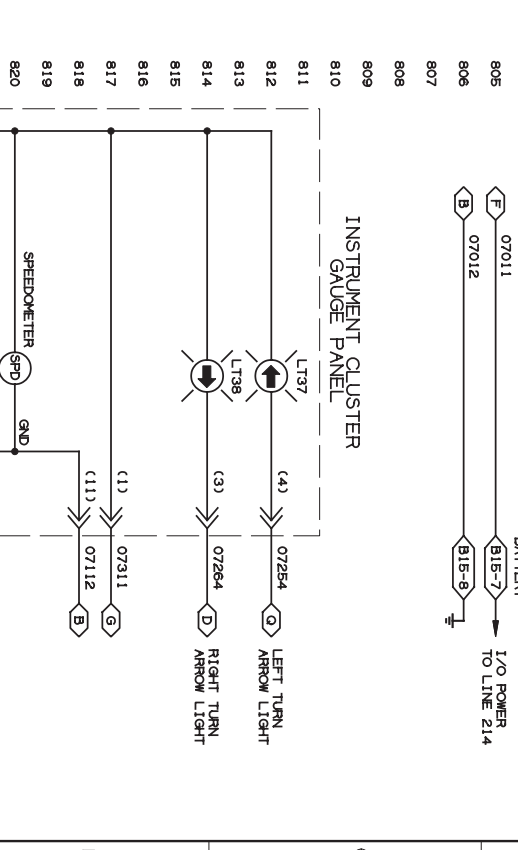
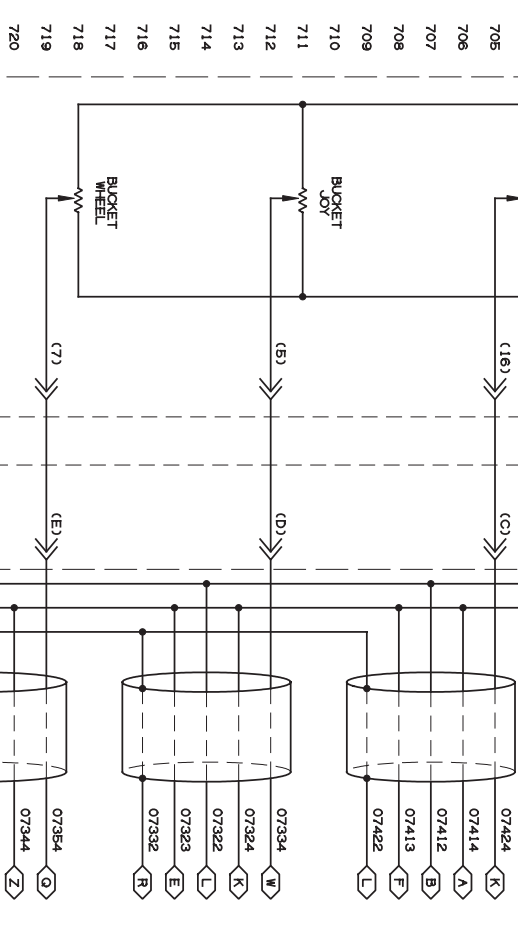
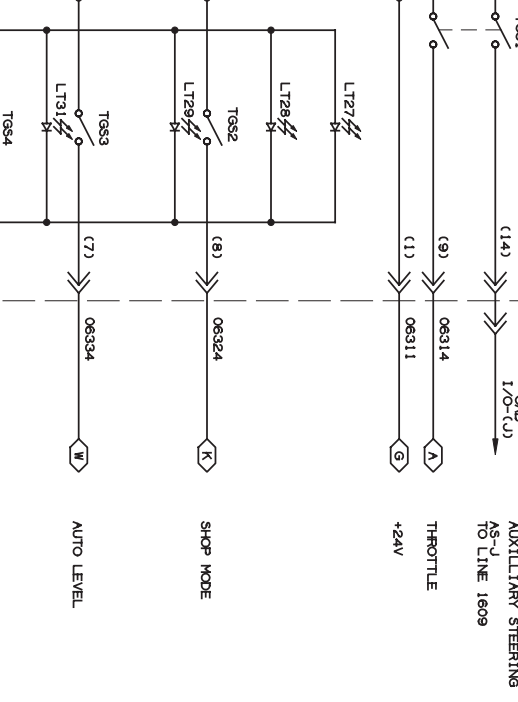
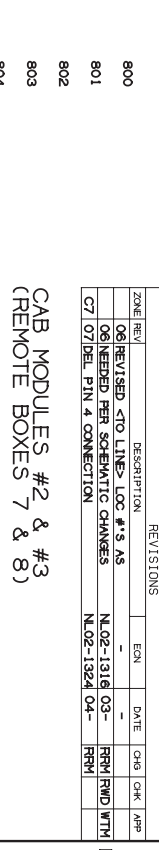
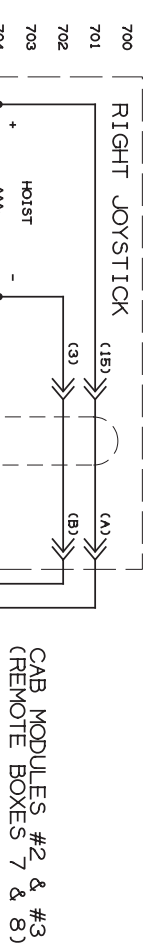
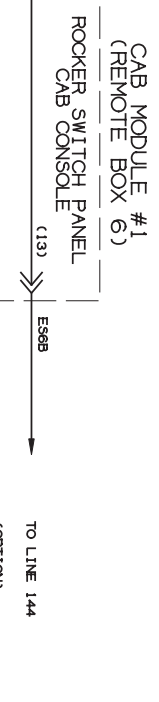


ZONE	REV	DESCRIPTION	ECN	DATE	CHK	APP
06	REVISED <TO LINE# LOC # 9 AS	N.02-1316 03-			RHM	RWD
07	NEEDED PER SCHEMATIC CHANGES	N.02-1324 04-			RHM	WTH
07	07/DEL PIN 4 CONNECTION	N.02-1324 04-			RHM	



INDICATES CONNECTION PIN NUMBERS/LETTERS

DO NOT SCALE

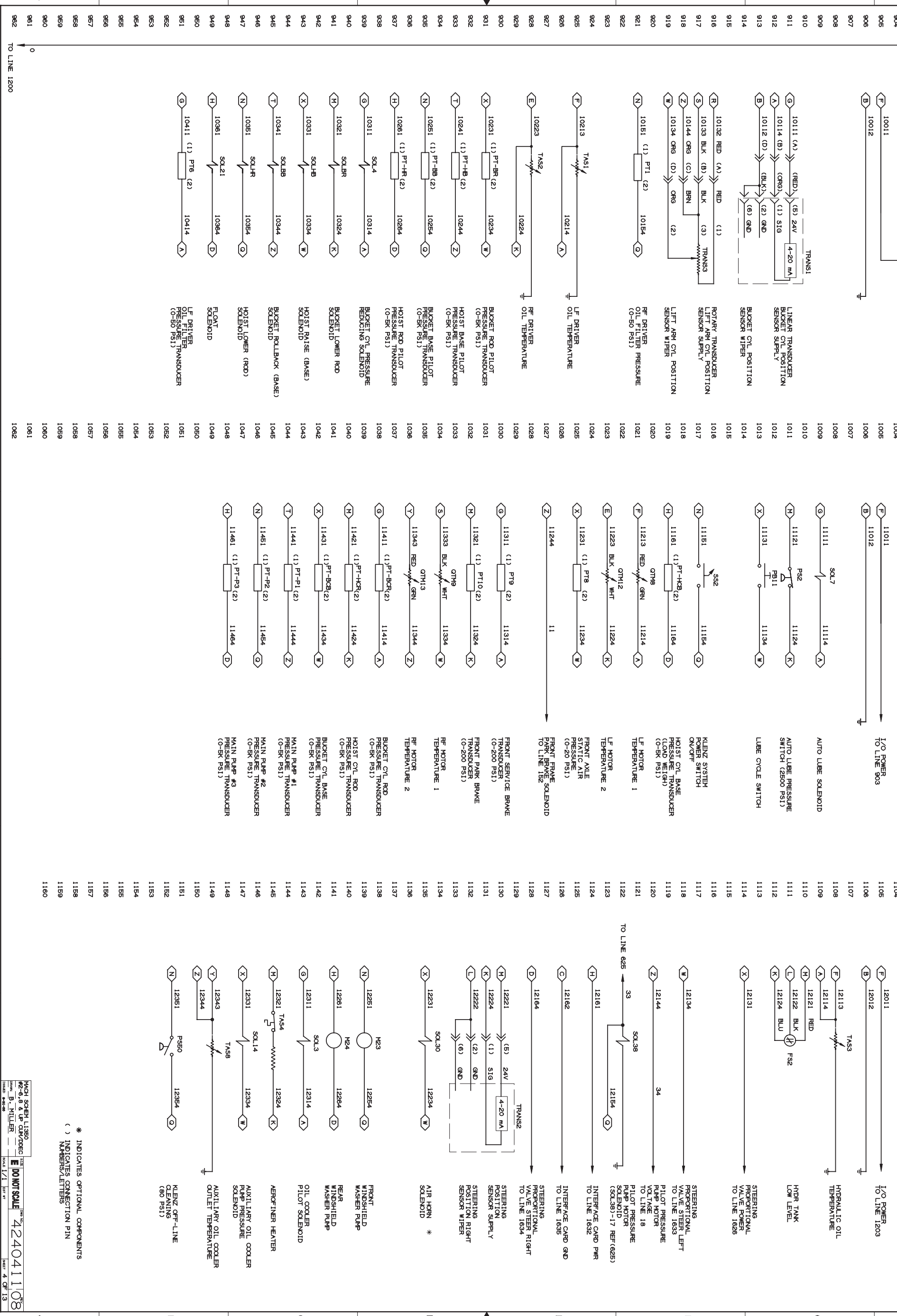
424041107

ZONE	REV	DESCRIPTION	ECN	DATE	CHK	APP
	08	UPDATED CIRCUITRY FOR TRANS 1 & 2	-	-	-	-
	08	DEL. SERVICE SW - BOX 10	-	-	-	-
	08	DEL. SERVICE SW - BOX 11 DEL. SERVICE SW - BOX 12	-	-	-	-
	B2	08 (LITE)(41)-BOX 12/NO RENZ OPT-LINE N.02-1344 08-	-	-	-	RFM

FRONT FRAME MODULE #1
(REMOTE BOX 10)

FRONT FRAME MODULE #2
(REMOTE BOX 11)

REAR FRAME MODULE #1
(REMOTE BOX 12)



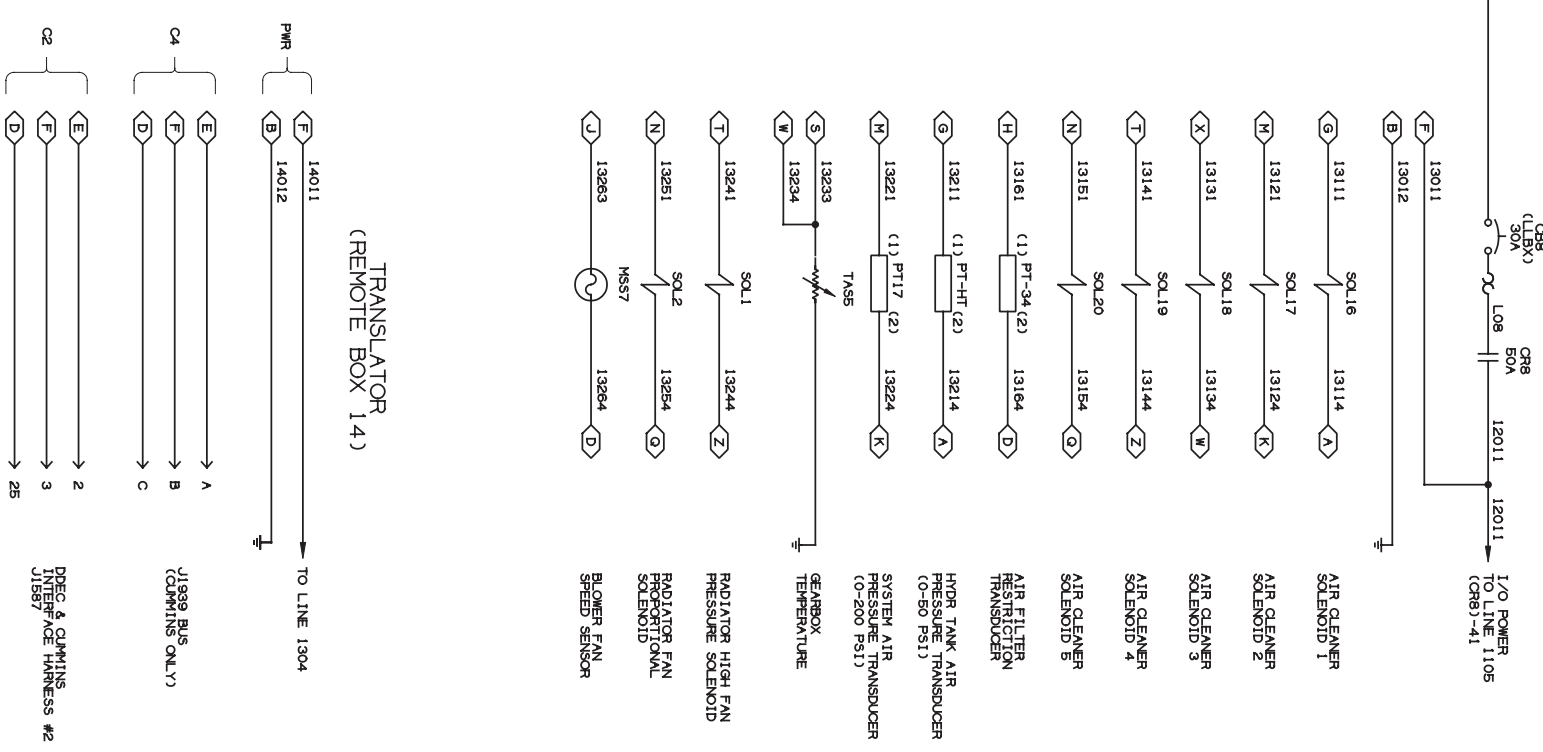
() INDICATES OPTIONAL COMPONENTS
NUMBERS/LETTERS

MACH SCHEM L1350
 REV 9-8 & UP QAW/DEC
 DRAWN BY MILLER
 EDO NOT SCALE
 424041108
 SCALE 1/1
 SHEET 4 OF 13

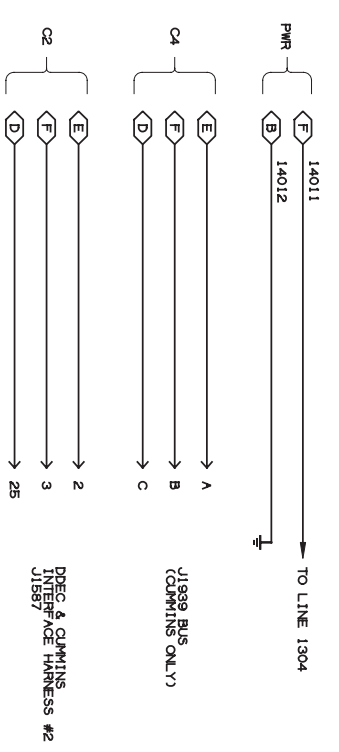
ZONE	REV	DESCRIPTION	EN	DATE	CHK	APP
F4	08	RE-DREW TMS9 CIRCUITRY; DEL OPTION	-	-	-	-
F4: 08:NOTE FOR AUX OIL COOLER - BOX 15 N.02-1344 08- RPH						

REVISIONS

REAR FRAME MODULE #2 (REMOTE BOX 13)

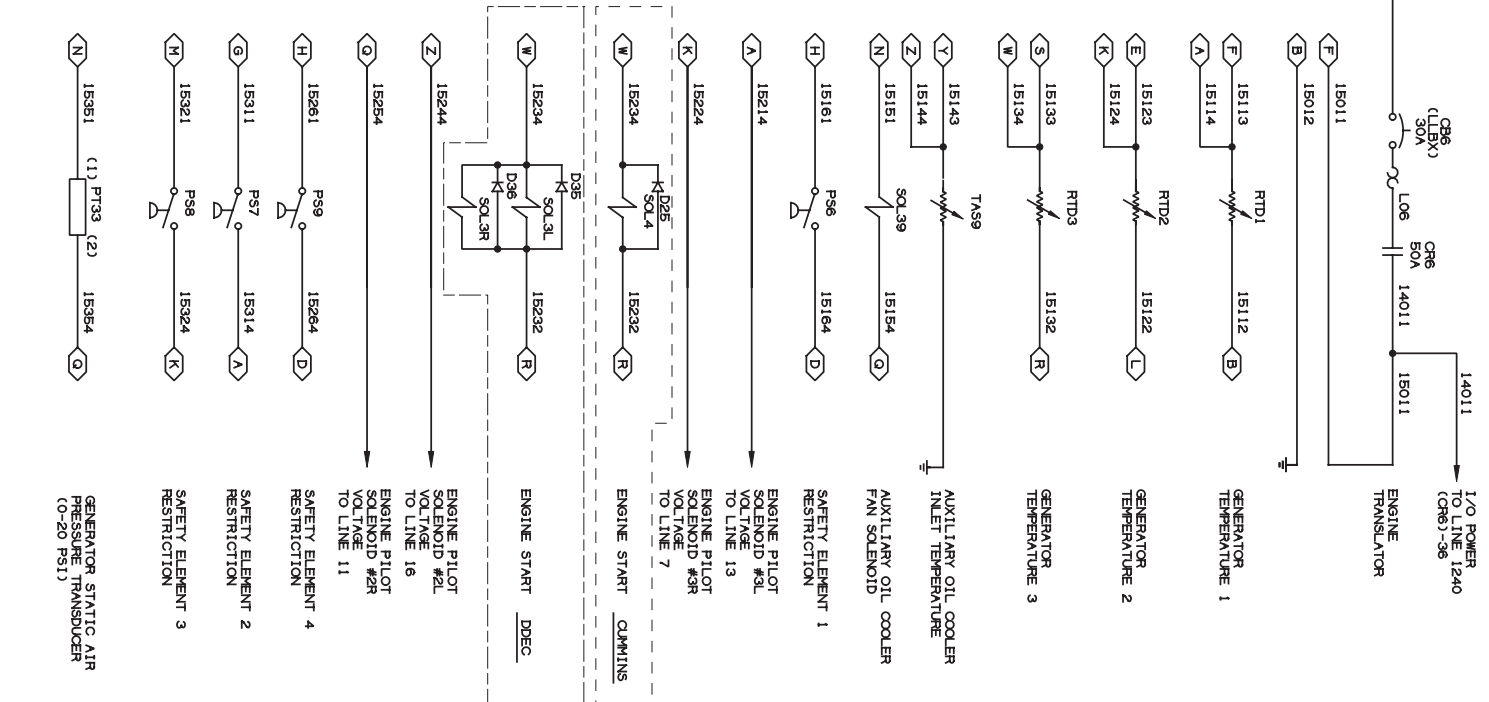


TRANSLATOR (REMOTE BOX 14)

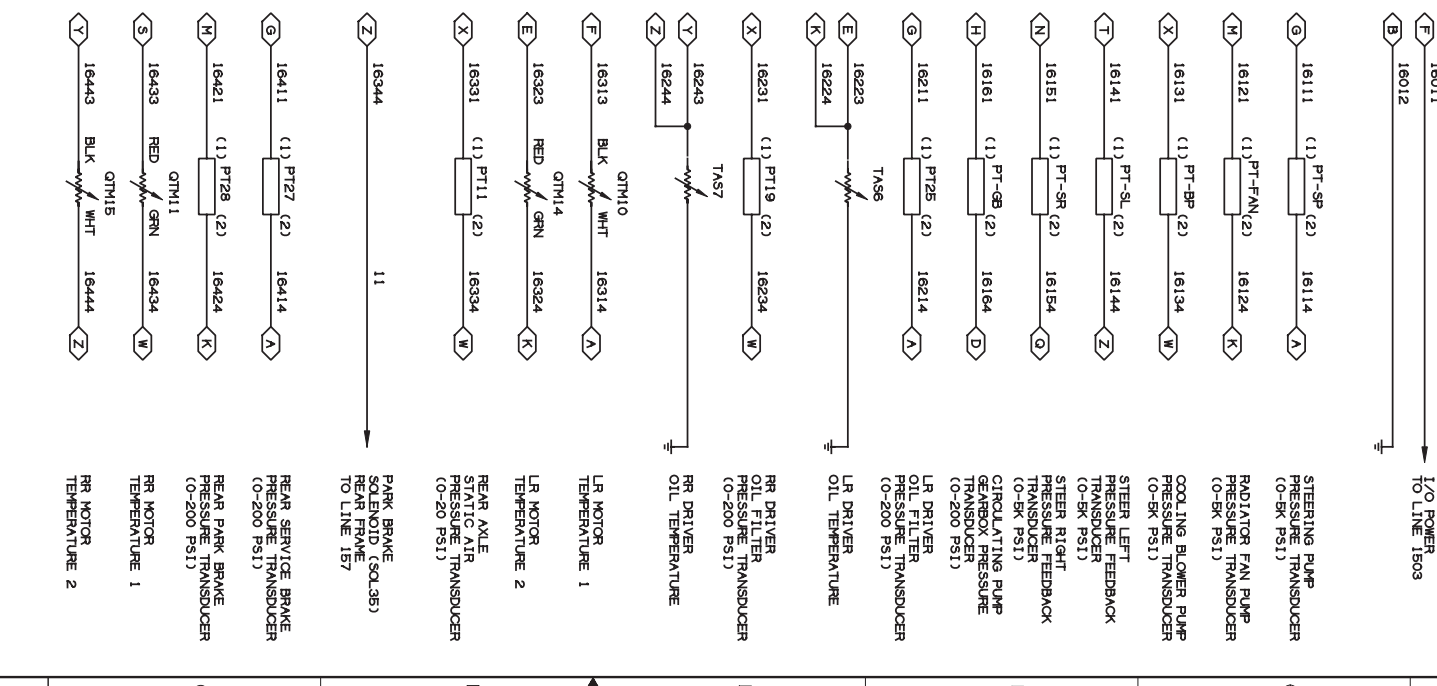


DOEC & CLMINTS
INTERF/ACE HARNESS #2
J15B7

ENGINE (REMOTE BOX 15)



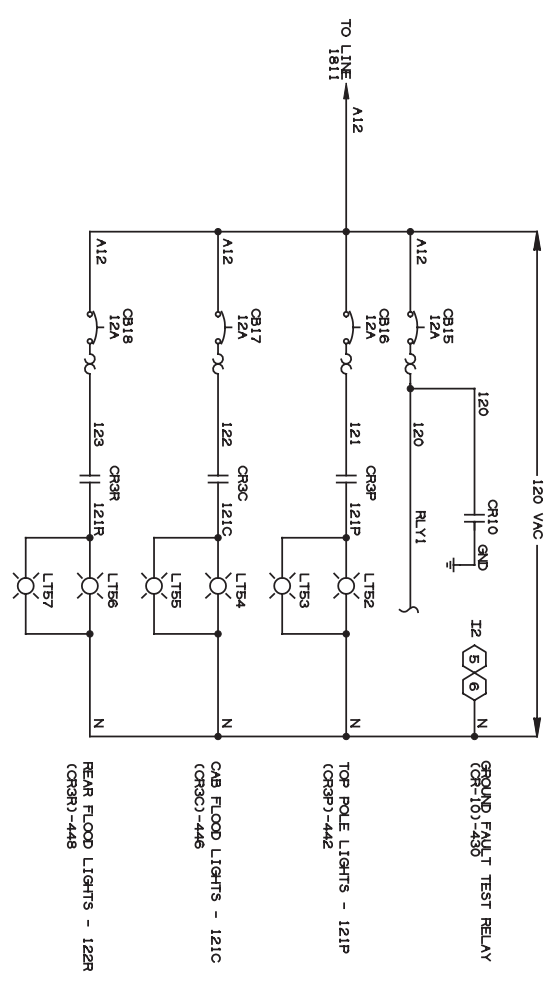
REAR AXLE (REMOTE BOX 16)



() INDICATES CONNECTOR PIN
NUMBERS/LETTERS

WACH SCHEM L1350
REV 9-8 & UP ONLY/DOEC
Drawn: B. MILLER
Scale: 1/1
Date: 424041108
Sheet: 5 OF 13

ZONE	REV	DESCRIPTION	CON	DATE	CHK	APP
08	DEL	RESISTOR R16, WIRE NO. 4F		N.02-1344		
08	DEL	REMOVED FUSES QTH1, QTH2				

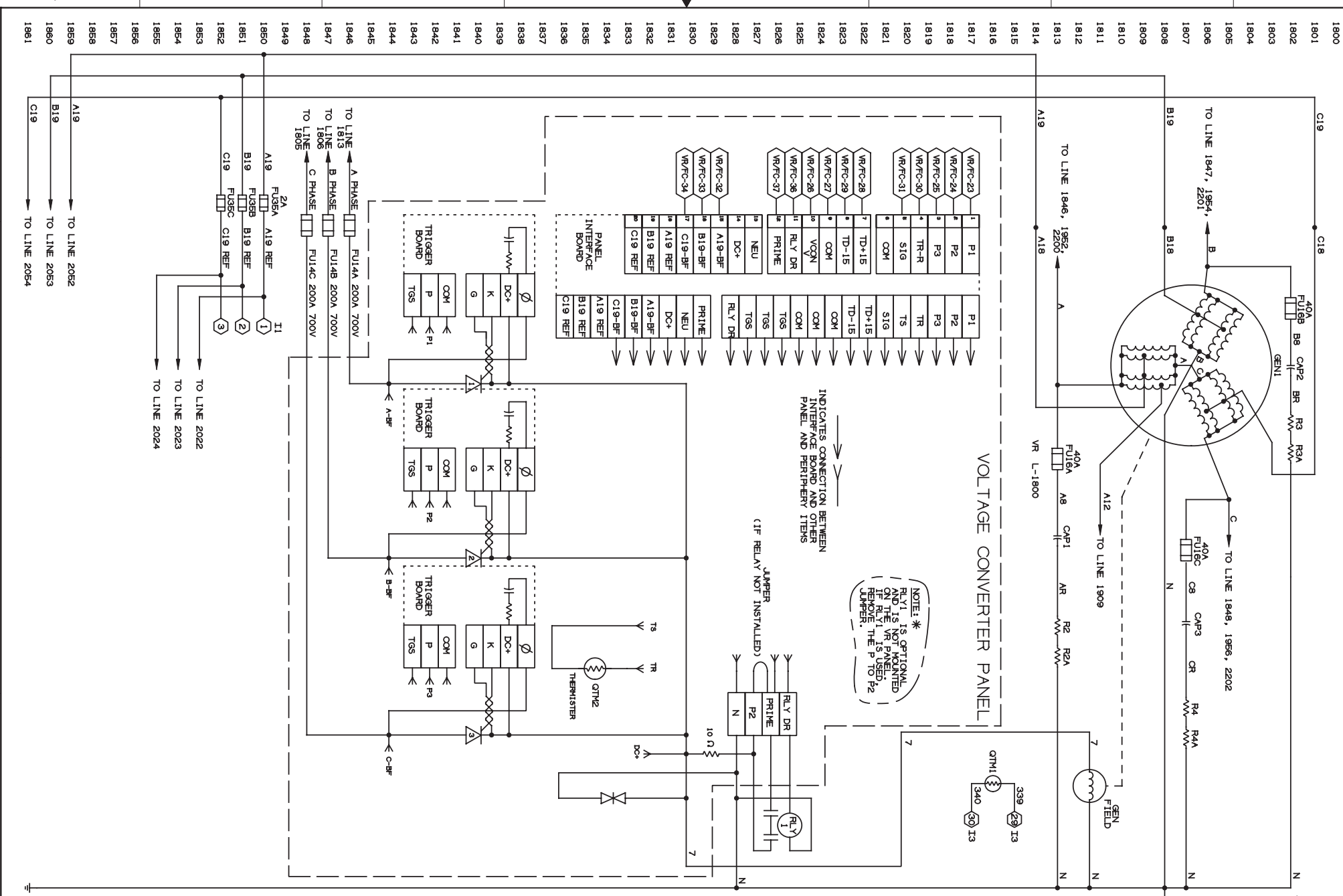


GROUND FAULT TEST RELAY (CR10)-430

TOP POLE LIGHTS - 121P (CR3P)-442

CAB FLOOD LIGHTS - 121C (CR3C)-448

REAR FLOOD LIGHTS - 122R (CR3R)-448



VOLTAGE CONVERTER PANEL

NOTE: * RLY1 IS OPTIONAL AND IS NOT MOUNTED IF RLY1 IS USED. REMOVE THE P TO P2 JUMPER.

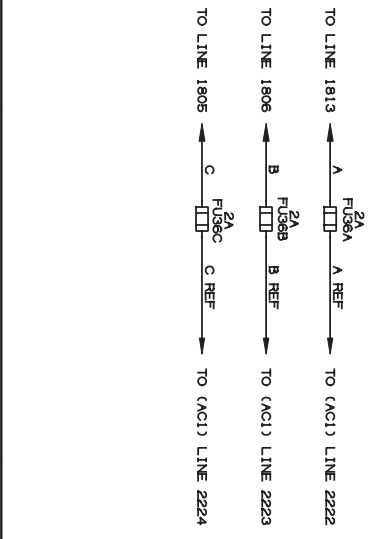
INDICATES CONNECTION BETWEEN INTERFACE BOARD AND OTHER PANEL AND PERIPHERY ITEMS

JUMPER (IF RELAY NOT INSTALLED)

10 Ω

THERMISTOR (QTH2)

- 1900 MAIN GENERATOR - 9B
- 1901 A, B AND C PHASE TO LINE
- 1902 A12, B12 & C12 LINE TO NEUTRAL
- 1903 A12, B12 & C12 LINE TO NEUTRAL
- 1904 TO NEUTRAL
- 1905 120V @ 66 HZ.
- 1906 A18, B18 & C18 LINE TO NEUTRAL
- 1907 178.4V @ 66 HZ.
- 1908 PRI15
- 1909 GROUND FAULT LIGHTING RESISTOR (4 FA - 250, 225W) (100 OHMS TOTAL)
- 1910
- 1911
- 1912
- 1913
- 1914
- 1915
- 1916
- 1917
- 1918
- 1919
- 1920
- 1921
- 1922
- 1923
- 1924
- 1925
- 1926
- 1927
- 1928
- 1929
- 1930
- 1931
- 1932
- 1933
- 1934
- 1935
- 1936
- 1937
- 1938
- 1939
- 1940
- 1941
- 1942
- 1943
- 1944
- 1945
- 1946
- 1947
- 1948
- 1949
- 1950
- 1951
- 1952
- 1953
- 1954
- 1955
- 1956
- 1957
- 1958
- 1959
- 1960



WACH SCHER L1350

42-9-8 & UP QUV/DEC

FORM B - MILLER

DO NOT SCALE

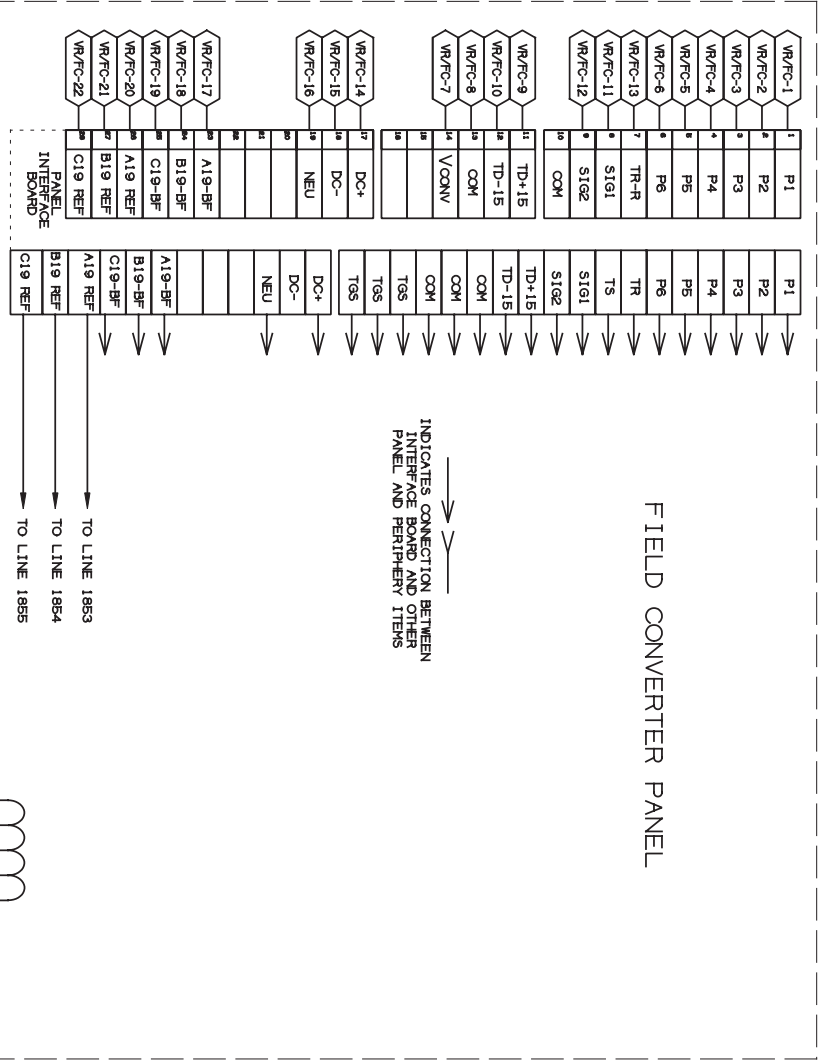
424041108

SCALE 1/1

DATE 7 OF 13

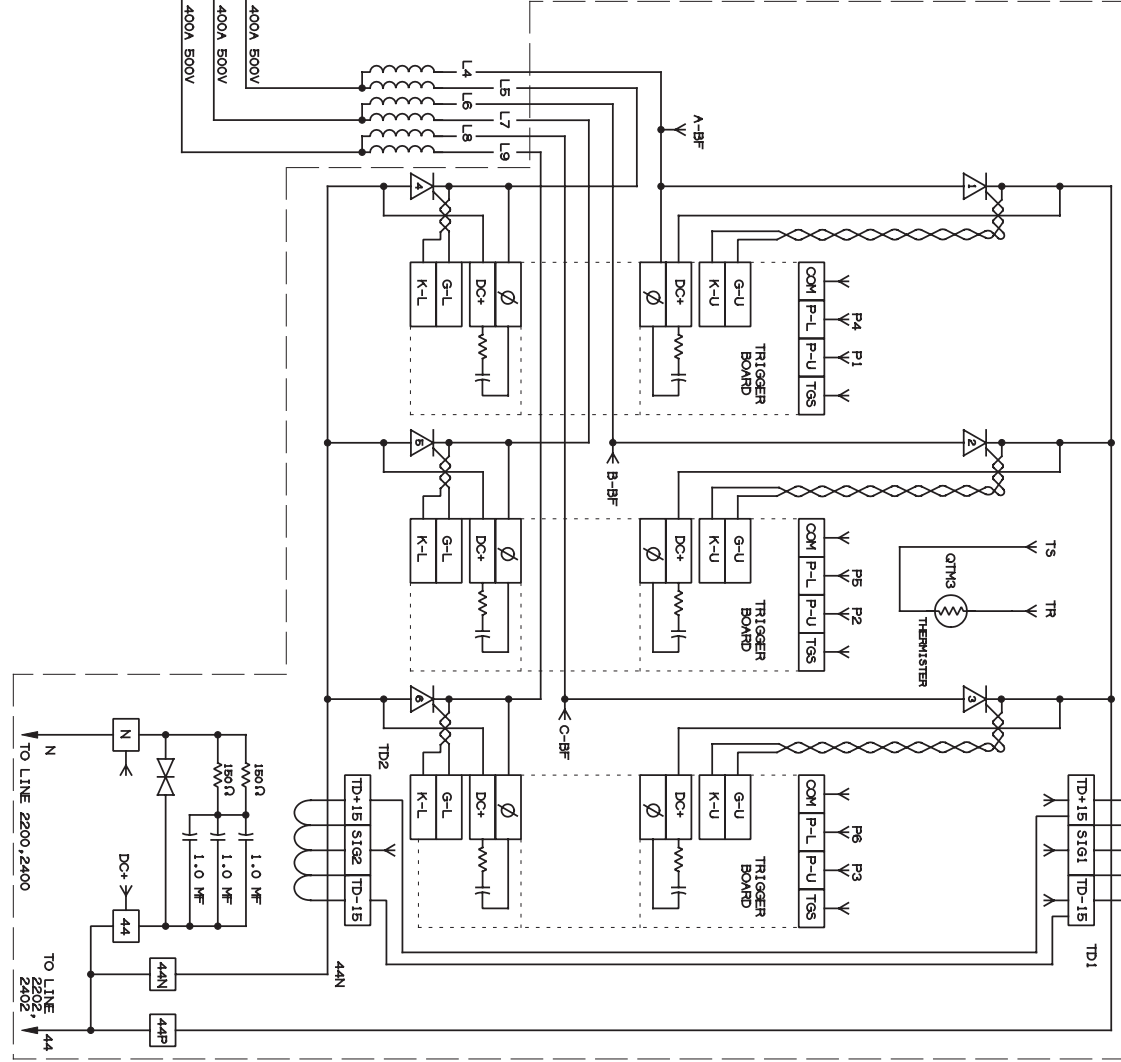
ZONE	REV	DESCRIPTION	ECN	DATE	CHK	OK	APP
	00	RELEASE	N.00-1490	9-28	RHM	JFH	WTH
	H7	01 RE-LABELLED FC PNL CONN DESCRIPTIONS N.00-1538	N.00-1538	11-23	RHM	JFH	WTH
		02 ADD WIRE #S L04-L09	N.01-0478	04-7	RHM	JFH	WTH
		03 WIRE CORRECTIONS BASED ON (HASTED)	N.01-1388	07-31	RHM	JFH	WTH
	E6	04 SOFTWARE SPREADSHEET WIRING	N.01-1885	09-	RHM		
		05 CORRECTED TO LINE LOCATIONS FOR	N.01-1885	09-	RHM		
		06 CORRECTED TO LINE LOCATIONS FOR	N.01-1885	09-	RHM		

REVISIONS	
2	1



INDICATES CONNECTION BETWEEN INTERFACE BOARD AND OTHER PANEL AND PERIPHERY ITEMS

FIELD CONVERTER PANEL



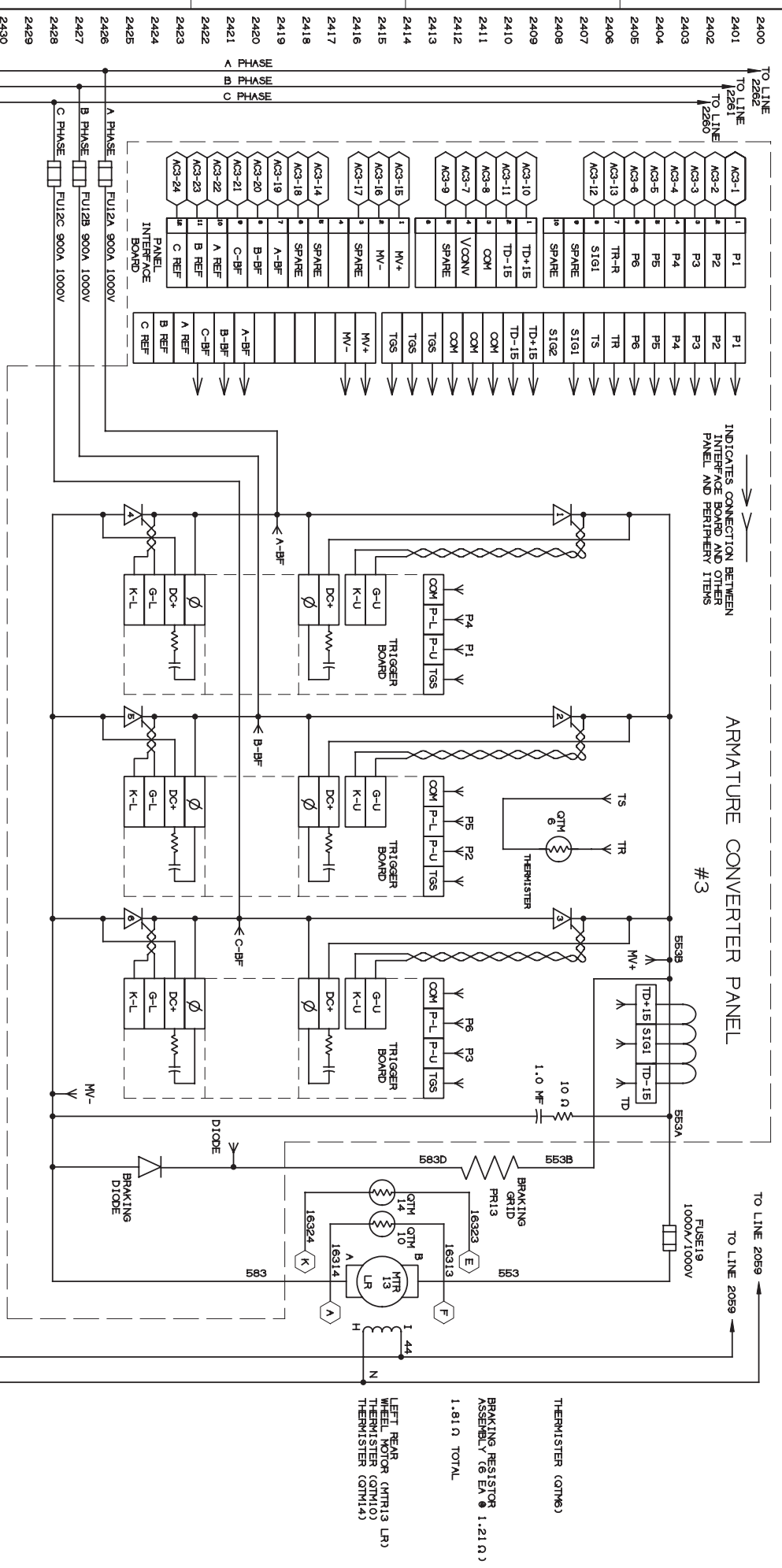
THERMISTOR (OTK3)

- 2000
- 2001
- 2002
- 2003
- 2004
- 2005
- 2006
- 2007
- 2008
- 2009
- 2010
- 2011
- 2012
- 2013
- 2014
- 2015
- 2016
- 2017
- 2018
- 2019
- 2020
- 2021
- 2022
- 2023
- 2024
- 2025
- 2026
- 2027
- 2028
- 2029
- 2030
- 2031
- 2032
- 2033
- 2034
- 2035
- 2036
- 2037
- 2038
- 2039
- 2040
- 2041
- 2042
- 2043
- 2044
- 2045
- 2046
- 2047
- 2048
- 2049
- 2050
- 2051
- 2052
- 2053
- 2054
- 2055
- 2056
- 2057
- 2058
- 2059
- 2060
- 2061

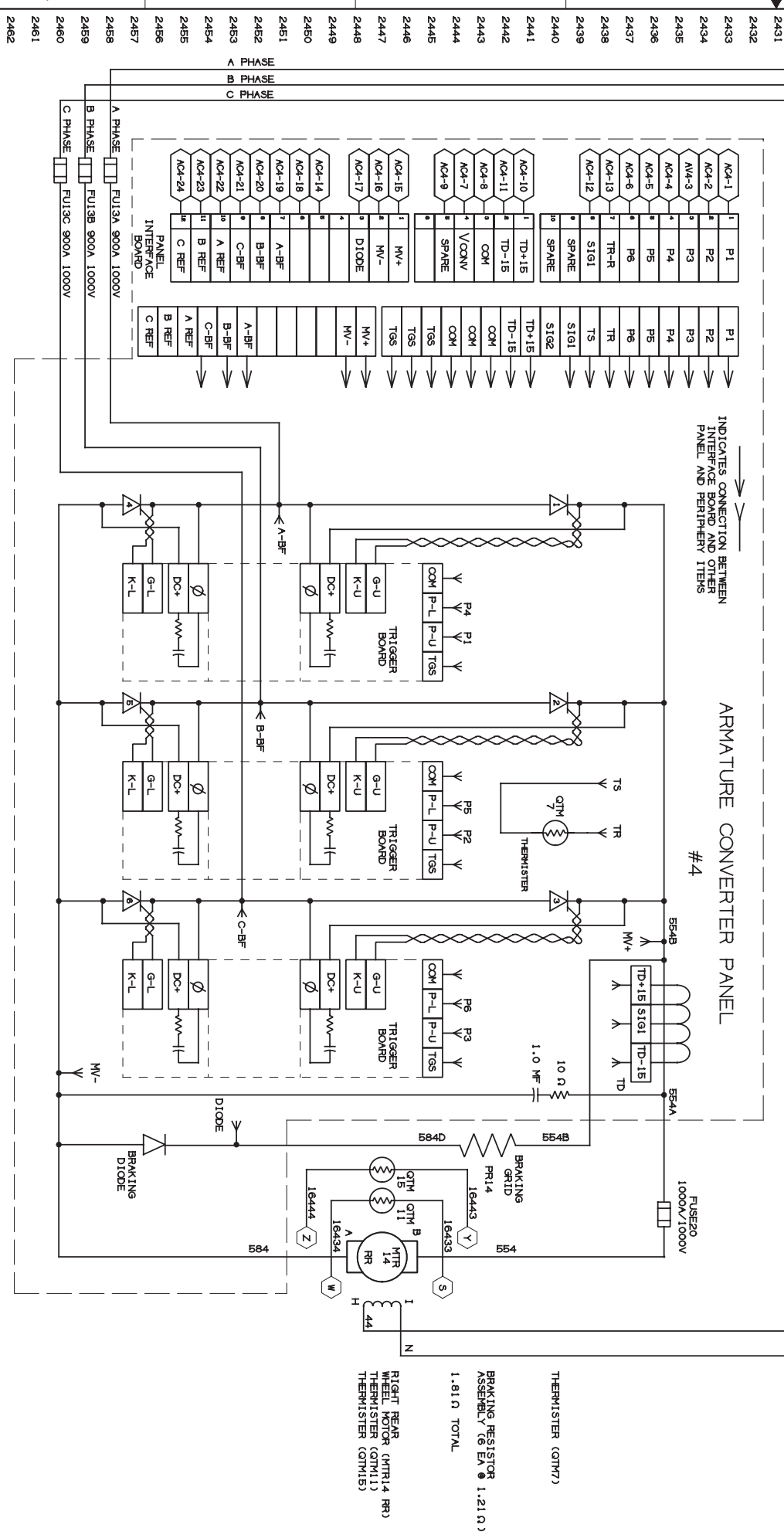
MACH SCHEM L1350
 42-5, 8 & UP CUV/DEC
 DRAWN BY MILLER
 DO NOT SCALE
 424041104
 SCALE 1/1
 SHEET 8 OF 13

ZONE	REV	DESCRIPTION	ECN	DATE	CHK	APP
00	RELEASE	N.00-1490	9-28	RFH	JFH	WTH
01	CORRECTED AC PNL. CONN LABELING	N.00-1538	11-23	RFH	JFH	WTH
02	ADD QTM'S 14 & 15 WITH # 5, 13, 14	N.01-0478	04-7	RFH	JFH	WTH
02	ADD FUSE SYMBOLS FU19 & 20	N.01-0478	04-7	RFH	JFH	WTH
03	MAKE CONNECTIONS BASED ON (MASTER)	N.01-1308	07-	RFH		
03	SOFTWARE SHADOWSHEET WIN10	N.01-1308	07-	RFH		

REV	DATE	BY	CHK	APP
2500				
2501				
2502				
2503				
2504				
2505				
2506				
2507				
2508				
2509				
2510				
2511				
2512				
2513				
2514				
2515				
2516				
2517				
2518				
2519				
2520				
2521				
2522				
2523				
2524				
2525				
2526				
2527				
2528				
2529				
2530				
2531				
2532				
2533				
2534				
2535				
2536				
2537				
2538				
2539				
2540				
2541				
2542				
2543				
2544				
2545				
2546				
2547				
2548				
2549				
2550				
2551				
2552				
2553				
2554				
2555				
2556				
2557				
2558				
2559				
2560				



- 2500 TO LINE 2089
- 2501 TO LINE 2089
- 2502 TO LINE 2089
- 2503 TO LINE 2089
- 2504 TO LINE 2089
- 2505 TO LINE 2089
- 2506 TO LINE 2089
- 2507 TO LINE 2089
- 2508 TO LINE 2089
- 2509 TO LINE 2089
- 2510 TO LINE 2089
- 2511 TO LINE 2089
- 2512 TO LINE 2089
- 2513 TO LINE 2089
- 2514 TO LINE 2089
- 2515 TO LINE 2089
- 2516 TO LINE 2089
- 2517 TO LINE 2089
- 2518 TO LINE 2089
- 2519 TO LINE 2089
- 2520 TO LINE 2089
- 2521 TO LINE 2089
- 2522 TO LINE 2089
- 2523 TO LINE 2089
- 2524 TO LINE 2089
- 2525 TO LINE 2089
- 2526 TO LINE 2089
- 2527 TO LINE 2089
- 2528 TO LINE 2089
- 2529 TO LINE 2089
- 2530 TO LINE 2089
- 2531 TO LINE 2089
- 2532 TO LINE 2089
- 2533 TO LINE 2089
- 2534 TO LINE 2089
- 2535 TO LINE 2089
- 2536 TO LINE 2089
- 2537 TO LINE 2089
- 2538 TO LINE 2089
- 2539 TO LINE 2089
- 2540 TO LINE 2089
- 2541 TO LINE 2089
- 2542 TO LINE 2089
- 2543 TO LINE 2089
- 2544 TO LINE 2089
- 2545 TO LINE 2089
- 2546 TO LINE 2089
- 2547 TO LINE 2089
- 2548 TO LINE 2089
- 2549 TO LINE 2089
- 2550 TO LINE 2089
- 2551 TO LINE 2089
- 2552 TO LINE 2089
- 2553 TO LINE 2089
- 2554 TO LINE 2089
- 2555 TO LINE 2089
- 2556 TO LINE 2089
- 2557 TO LINE 2089
- 2558 TO LINE 2089
- 2559 TO LINE 2089
- 2560 TO LINE 2089



- 2400 TO LINE 9000
- 2401 TO LINE 9000
- 2402 TO LINE 9000
- 2403 TO LINE 9000
- 2404 TO LINE 9000
- 2405 TO LINE 9000
- 2406 TO LINE 9000
- 2407 TO LINE 9000
- 2408 TO LINE 9000
- 2409 TO LINE 9000
- 2410 TO LINE 9000
- 2411 TO LINE 9000
- 2412 TO LINE 9000
- 2413 TO LINE 9000
- 2414 TO LINE 9000
- 2415 TO LINE 9000
- 2416 TO LINE 9000
- 2417 TO LINE 9000
- 2418 TO LINE 9000
- 2419 TO LINE 9000
- 2420 TO LINE 9000
- 2421 TO LINE 9000
- 2422 TO LINE 9000
- 2423 TO LINE 9000
- 2424 TO LINE 9000
- 2425 TO LINE 9000
- 2426 TO LINE 9000
- 2427 TO LINE 9000
- 2428 TO LINE 9000
- 2429 TO LINE 9000
- 2430 TO LINE 9000
- 2431 TO LINE 9000
- 2432 TO LINE 9000
- 2433 TO LINE 9000
- 2434 TO LINE 9000
- 2435 TO LINE 9000
- 2436 TO LINE 9000
- 2437 TO LINE 9000
- 2438 TO LINE 9000
- 2439 TO LINE 9000
- 2440 TO LINE 9000
- 2441 TO LINE 9000
- 2442 TO LINE 9000
- 2443 TO LINE 9000
- 2444 TO LINE 9000
- 2445 TO LINE 9000
- 2446 TO LINE 9000
- 2447 TO LINE 9000
- 2448 TO LINE 9000
- 2449 TO LINE 9000
- 2450 TO LINE 9000
- 2451 TO LINE 9000
- 2452 TO LINE 9000
- 2453 TO LINE 9000
- 2454 TO LINE 9000
- 2455 TO LINE 9000
- 2456 TO LINE 9000
- 2457 TO LINE 9000
- 2458 TO LINE 9000
- 2459 TO LINE 9000
- 2460 TO LINE 9000
- 2461 TO LINE 9000
- 2462 TO LINE 9000

MACH SCHEM L1380
 42-5, 8 & UP QUV/DEC
 DATE: 11/11/11
 DRAWN: B. MILLER
 CHECKED: J. MILLER
 SCALE: 424041103
 SHEET 10 OF 13

ZONE	REV	DESCRIPTION	ECN	DATE	CHK	APP
03	H01	SOFTWARE SPREADSHEET WIRING	N	01-13-98	07-	RPH

ADDRESS CHART

ADDRESS	SOLDER TO PIN 1	SOLDER TOGETHER
2800	H	C
2801	C	D
2802	D	E
2803	E	F
2804	F	G
2805	G	H
2806	H	I
2807	I	J
2808	J	K
2809	K	L
2810	L	M
2811	M	N
2812	N	O
2813	O	P
2814	P	Q
2815	Q	R
2816	R	S
2817	S	T
2818	T	U
2819	U	V
2820	V	W
2821	W	X
2822	X	Y
2823	Y	Z
2824	Z	A
2825	A	B
2826	B	C
2827	C	D
2828	D	E
2829	E	F
2830	F	G
2831	G	H
2832	H	I
2833	I	J
2834	J	K
2835	K	L
2836	L	M
2837	M	N
2838	N	O
2839	O	P
2840	P	Q
2841	Q	R
2842	R	S
2843	S	T
2844	T	U
2845	U	V
2846	V	W
2847	W	X
2848	X	Y
2849	Y	Z
2850	Z	A
2851	A	B
2852	B	C
2853	C	D
2854	D	E
2855	E	F
2856	F	G
2857	G	H
2858	H	I
2859	I	J
2860	J	K
2861	K	L
2862	L	M

REMOTE MODULE INPUT/OUTPUT CONNECTIONS
(4 INDIVIDUAL CONNECTORS)

MACHINE WIRE	CONNECTOR CABLE #	WIRE #	CONNECTOR PIN	FUNCTION
XXXX1	1	1	A	OUTPUT POWER (24V FUSED)
XXXX2	1	2	B	POWER GROUND
XXXX3	1	3	C	15V (WITH 1K OHM RESISTOR)
XXXX4	1	4	F	NORMAL INPUT/OUTPUT
XXXX1	2	1	A	OUTPUT POWER (24V FUSED)
XXXX2	2	2	L	POWER GROUND
XXXX3	2	3	E	15V (WITH 1K OHM RESISTOR)
XXXX4	2	4	K	NORMAL INPUT/OUTPUT
XXXX1	3	1	X	OUTPUT POWER (24V FUSED)
XXXX2	3	2	R	POWER GROUND
XXXX3	3	3	S	15V (WITH 1K OHM RESISTOR)
XXXX4	3	4	W	INPUT/OUTPUT WITH SWITCH TO BATTERY
XXXX1	4	1	U	OUTPUT POWER (24V FUSED)
XXXX2	4	2	T	POWER GROUND
XXXX3	4	3	Z	15V (WITH 1K OHM RESISTOR)
XXXX4	4	4	N	NORMAL INPUT/OUTPUT
XXXX1	5	1	N	OUTPUT POWER (24V FUSED)
XXXX2	5	2	B	POWER GROUND
XXXX3	5	3	P	15V (WITH 1K OHM RESISTOR)
XXXX4	5	4	H	NORMAL INPUT/OUTPUT
XXXX1	6	1	C	OUTPUT POWER (24V FUSED)
XXXX2	6	2	J	POWER GROUND
XXXX3	6	3	U	BALANCED FREQUENCY INPUT (SEE D)
XXXX4	6	4	D	INPUT/OUTPUT WITH FREQUENCY

CONTROLLER

AMP CIRCUIT CON PIN	SIGNAL NAME	WIRE MARKER	TERM SIZE
1	A19	A19REF	#8
2	B19	B19REF	#8
3	C19	C19REF	#8
4			
5			
6			
7			
8			
9			
10			
11			
12			
13			
14	24V	3B1	#10
15	24V	3B1	#10
16	COM	G	#10
17	COM	G	#10
18	SPARE		#8
19	SPARE		#8
20	24V	3B1	#10
21	COM	G	#10
22	SPARE		#8
23	SPARE		#8
24	NEU	NEU	#8

CONTROLLER

AMP CIRCUIT CON PIN	SIGNAL NAME	WIRE MARKER	TERM SIZE
1	24V	3B1	#10
2	COM	G	#10
3	F12V	L12V	#8
4	SPD1	92L	#8
5	DIR1	93L	#8
6	COM	L6	#8
7	SPD2	92R	#8
8	DIR2	93R	#8
9	COM	94L	#8
10	120R	94L	#8
11	SPD3	94L	#8
12	COM	L6G	#8
13	SPD4	92RR	#8
14	COM	R6G	#8
15	SPARE		#8
16	SPARE		#8

MASTER (M24 CONNECTOR)
CONNECTOR P/N WITH PINS: (423-2160)

PIN #	CONNECTOR	PIN
A	KSW-A	14
B	KSW-A	13
C	KSW-A	12
D	KSW-A	11
E	KSW-A	10
F	KSW-A	9
G	KSW-A	8
H	KSW-A	7
J	COM I/O	C
K	COM I/O	D
L	BAT-515	3
M	BAT-515	4
N	BAT-515	1
O	BAT-515	2
P	BAT-515	H
R	BAT-515	H
S	BAT-515	D
T	BAT-515	D
U	BAT-9	G
V	BAT-9	G
W	BAT-9	G
X	BAT-9	G
Y	BAT-9	G
Z	BAT-9	G
A	BAT-9	G
B	BAT-9	G
C	BAT-9	G
D	BAT-9	G
E	BAT-9	G
F	BAT-9	G
G	BAT-9	G
H	BAT-9	G
J	BAT-9	G
K	BAT-9	G
L	BAT-9	G
M	BAT-9	G
N	BAT-9	G
O	BAT-9	G
P	BAT-9	G
R	BAT-9	G
S	BAT-9	G
T	BAT-9	G
U	BAT-9	G
V	BAT-9	G
W	BAT-9	G
X	BAT-9	G
Y	BAT-9	G
Z	BAT-9	G
A	BAT-9	G
B	BAT-9	G
C	BAT-9	G
D	BAT-9	G
E	BAT-9	G
F	BAT-9	G
G	BAT-9	G
H	BAT-9	G
J	BAT-9	G
K	BAT-9	G
L	BAT-9	G
M	BAT-9	G
N	BAT-9	G
O	BAT-9	G
P	BAT-9	G
R	BAT-9	G
S	BAT-9	G
T	BAT-9	G
U	BAT-9	G
V	BAT-9	G
W	BAT-9	G
X	BAT-9	G
Y	BAT-9	G
Z	BAT-9	G
A	BAT-9	G
B	BAT-9	G
C	BAT-9	G
D	BAT-9	G
E	BAT-9	G
F	BAT-9	G
G	BAT-9	G
H	BAT-9	G
J	BAT-9	G
K	BAT-9	G
L	BAT-9	G
M	BAT-9	G
N	BAT-9	G
O	BAT-9	G
P	BAT-9	G
R	BAT-9	G
S	BAT-9	G
T	BAT-9	G
U	BAT-9	G
V	BAT-9	G
W	BAT-9	G
X	BAT-9	G
Y	BAT-9	G
Z	BAT-9	G
A	BAT-9	G
B	BAT-9	G
C	BAT-9	G
D	BAT-9	G
E	BAT-9	G
F	BAT-9	G
G	BAT-9	G
H	BAT-9	G
J	BAT-9	G
K	BAT-9	G
L	BAT-9	G
M	BAT-9	G
N	BAT-9	G
O	BAT-9	G
P	BAT-9	G
R	BAT-9	G
S	BAT-9	G
T	BAT-9	G
U	BAT-9	G
V	BAT-9	G
W	BAT-9	G
X	BAT-9	G
Y	BAT-9	G
Z	BAT-9	G
A	BAT-9	G
B	BAT-9	G
C	BAT-9	G
D	BAT-9	G
E	BAT-9	G
F	BAT-9	G
G	BAT-9	G
H	BAT-9	G
J	BAT-9	G
K	BAT-9	G
L	BAT-9	G
M	BAT-9	G
N	BAT-9	G
O	BAT-9	G
P	BAT-9	G
R	BAT-9	G
S	BAT-9	G
T	BAT-9	G
U	BAT-9	G
V	BAT-9	G
W	BAT-9	G
X	BAT-9	G
Y	BAT-9	G
Z	BAT-9	G
A	BAT-9	G
B	BAT-9	G
C	BAT-9	G
D	BAT-9	G
E	BAT-9	G
F	BAT-9	G
G	BAT-9	G
H	BAT-9	G
J	BAT-9	G
K	BAT-9	G
L	BAT-9	G
M	BAT-9	G
N	BAT-9	G
O	BAT-9	G
P	BAT-9	G
R	BAT-9	G
S	BAT-9	G
T	BAT-9	G
U	BAT-9	G
V	BAT-9	G
W	BAT-9	G
X	BAT-9	G
Y	BAT-9	G
Z	BAT-9	G
A	BAT-9	G
B	BAT-9	G
C	BAT-9	G
D	BAT-9	G
E	BAT-9	G
F	BAT-9	G
G	BAT-9	G
H	BAT-9	G
J	BAT-9	G
K	BAT-9	G
L	BAT-9	G
M	BAT-9	G
N	BAT-9	G
O	BAT-9	G
P	BAT-9	G
R	BAT-9	G
S	BAT-9	G
T	BAT-9	G
U	BAT-9	G
V	BAT-9	G
W	BAT-9	G
X	BAT-9	G
Y	BAT-9	G
Z	BAT-9	G
A	BAT-9	G
B	BAT-9	G
C	BAT-9	G
D	BAT-9	G
E	BAT-9	G
F	BAT-9	G
G	BAT-9	G
H	BAT-9	G
J	BAT-9	G
K	BAT-9	G
L	BAT-9	G
M	BAT-9	G
N	BAT-9	G
O	BAT-9	G
P	BAT-9	G
R	BAT-9	G
S	BAT-9	G
T	BAT-9	G
U	BAT-9	G
V	BAT-9	G
W	BAT-9	G
X	BAT-9	G
Y	BAT-9	G
Z	BAT-9	G
A	BAT-9	G
B	BAT-9	G
C	BAT-9	G
D	BAT-9	G
E	BAT-9	G
F	BAT-9	G
G	BAT-9	G
H	BAT-9	G
J	BAT-9	G
K	BAT-9	G
L	BAT-9	G
M	BAT-9	G
N	BAT-9	G
O	BAT-9	G
P	BAT-9	G
R	BAT-9	G
S	BAT-9	G
T	BAT-9	G
U	BAT-9	G
V	BAT-9	G
W	BAT-9	G
X	BAT-9	G
Y	BAT-9	G
Z	BAT-9	G
A	BAT-9	G
B	BAT-9	G
C	BAT-9	G
D	BAT-9	G
E	BAT-9	G
F	BAT-9	G
G	BAT-9	G
H	BAT-9	G
J	BAT-9	G
K	BAT-9	G
L	BAT-9	G
M	BAT-9	G
N	BAT-9	G
O	BAT-9	G
P	BAT-9	G
R	BAT-9	G
S	BAT-9	G
T	BAT-9	G
U	BAT-9	G
V	BAT-9	G
W	BAT-9	G
X	BAT-9	G
Y	BAT-9	G
Z	BAT-9	G
A	BAT-9	G
B	BAT-9	G
C	BAT-9	G
D	BAT-9	G
E	BAT-9	G
F	BAT-9	G
G	BAT-9	G
H	BAT-9	G
J	BAT-9	G
K	BAT-9	G
L	BAT-9	G
M	BAT-9	G
N	BAT-9	G
O	BAT-9	G
P	BAT-9	G
R	BAT-9	G
S	BAT-9	G
T	BAT-9	G
U	BAT-9	G
V	BAT-9	G
W	BAT-9	G
X	BAT-9	G
Y	BAT-9	G
Z	BAT-9	G
A	BAT-9	G
B	BAT-9	G
C	BAT-9	G
D	BAT-9	G
E	BAT-9	G
F	BAT-9	G
G	BAT-9	G
H	BAT-9	G
J	BAT-9	G
K	BAT-9	G
L	BAT-9	G
M	BAT-9	G
N	BAT-9	G
O	BAT-9	G
P	BAT-9	G
R	BAT-9	G
S	BAT-9	G
T	BAT-9	G
U	BAT-9	G
V	BAT-9	G
W	BAT-9	G
X	BAT-9	G
Y	BAT-9	G
Z	BAT-9	G
A	BAT-9	G
B	BAT-9	G
C	BAT-9	G
D	BAT-9	G
E	BAT-9	G
F	BAT-9	G
G	BAT-9	G
H	BAT-9	G
J	BAT-9	G
K	BAT-9	G
L	BAT-9	G
M	BAT-9	G
N	BAT-9	G
O	BAT-9	G
P	BAT-9	G
R	BAT-9	G
S	BAT-9	G
T	BAT-9	G
U	BAT-9	G
V	BAT-9	G
W	BAT-9	G
X	BAT-9	G
Y	BAT-9	G
Z	BAT-	

